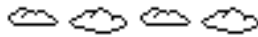


MEPBM Games
presents

Middle-earth Play-By-Mail™
Third Age, circa 1650



GAME # 52



--- Game Won ! ---

Final Victory Points: 2550

Victory Conditions :

- To acquire 10 additional artifacts (24) of any alignment.√
- To see to the termination of Waulfa by any means whatsoever.√
- To hold at game end the population center of Elnost at 2208.√
- To see to the termination of Urgubal by any means whatsoever.
- To see to the termination of Dûran by any means whatsoever.√

Top 3 Positions :

Noldo Elves [2550] Haradwaith [1725] Southern Gondor [1417]

Population Center Victory Points : 500

Character Victory Points : 500

Wealth Victory Points : 500

Army Victory Points : 450

Individual Victory Points : 600

The One Ring was held by Elrond @ 3423

Internet G052N10

P N 10
NONE
NONE
NONE

Game #	:	52
Player #	:	10
Turn #	:	49
Account	:	\$ 0.00
Free Turns	:	0
Security Code	:	7745
Special Service	:	YES

Noldo Elves

(A Free People)

Season : Fall

RELATIONS WITH OTHER NATIONS

Woodmen	: Tolerated	Northmen	: Tolerated	Éothraim	: Tolerated
Arthedain	: Neutral	Cardolan	: Tolerated	Northern Gondor	: Tolerated
Southern Gondor	: Tolerated	Dwarves	: Tolerated	Sinda Elves	: Tolerated
Witch-king	: Hated	Dragon Lord	: Hated	Dog Lord	: Disliked
Cloud Lord	: Hated	Blind Sorcerer	: Disliked	Ice King	: Hated
Quiet Avenger	: Disliked	Fire King	: Disliked	Long Rider	: Disliked
Dark Lieutenants	: Hated	Corsairs	: Disliked	Haradwaith	: Friendly
Dunlendings	: Tolerated	Rhudaur	: Hated	Easterlings	: Neutral

POPULATION CENTERS

Aliende Location : @ 0912 in Hills & Rough Climate is Mild

Size : Village	Fortifications : None	Loyalty : 72	Docks : None	Hidden ? : No	Sieged ? : No			
Surplus Product	Leather	Bronze	Steel	Mithril	Food	Timber	Mounts	Gold
Expected production	0	0	0	0	0	101	29	2000
Current stores	0	0	0	0	0	104	60	-

Anduni Location : @ 1517 in Mixed Forest Climate is Mild

Size : Village	Fortifications : None	Loyalty : 93	Docks : None	Hidden ? : No	Sieged ? : No			
Surplus Product	Leather	Bronze	Steel	Mithril	Food	Timber	Mounts	Gold
Expected production	0	0	0	0	353	281	0	0
Current stores	0	0	0	0	756	289	0	-

Angsûl Location : @ 1905 in Open Plains Climate is Cold

Size : Camp	Fortifications : Tower	Loyalty : 68	Docks : None	Hidden ? : No	Sieged ? : No			
Surplus Product	Leather	Bronze	Steel	Mithril	Food	Timber	Mounts	Gold
Expected production	177	0	0	0	297	0	3	0
Current stores	2150	0	0	0	657	0	6	-

Annúminas Location : @ 1108 in Hills & Rough Climate is Cool

Size : Village	Fortifications : Fort	Loyalty : 70	Docks : None	Hidden ? : No	Sieged ? : No			
Surplus Product	Leather	Bronze	Steel	Mithril	Food	Timber	Mounts	Gold
Expected production	0	216	0	0	755	0	0	1000
Current stores	0	1965	0	0	1624	0	0	-

Arames Location : @ 1427 in Shore/Plains Climate is Warm

Size : Village	Fortifications : None	Loyalty : 68	Docks : None	Hidden ? : No	Sieged ? : No			
Surplus Product	Leather	Bronze	Steel	Mithril	Food	Timber	Mounts	Gold
Expected production	248	0	0	0	928	0	40	0
Current stores	1604	0	0	0	1983	0	82	-

Argond Location : @ 1514 in Shore/Plains Climate is Mild

Size : Village	Fortifications : Tower	Loyalty : 92	Docks : None	Hidden ? : No	Sieged ? : No			
Surplus Product	Leather	Bronze	Steel	Mithril	Food	Timber	Mounts	Gold
Expected production	122	0	0	0	1361	0	58	0
Current stores	928	0	0	0	2933	0	122	-

Athrad Sarn Location : @ 1211 in Shore/Plains Climate is Mild

Size : Major Town	Fortifications : Tower	Loyalty : 100	Docks : None	Hidden ? : No	Sieged ? : No			
Surplus Product	Leather	Bronze	Steel	Mithril	Food	Timber	Mounts	Gold
Expected production	90	0	0	0	130	0	18	0
Current stores	637	0	0	0	278	0	37	-

Auenland Location : @ 1209 in Hills & Rough Climate is Mild

Size : Major Town	Fortifications : Tower	Loyalty : 99	Docks : None	Hidden ? : No	Sieged ? : No			
Surplus Product	Leather	Bronze	Steel	Mithril	Food	Timber	Mounts	Gold
Expected production	0	64	0	0	0	54	0	1400
Current stores	0	583	0	0	0	56	0	-

Balinda Location : @ 0608 in Mountains Climate is Cool
 Size : Village Fortifications : None Loyalty : 86 Docks : None Hidden ? : No Sieged ? : No
 Surplus Product Leather Bronze Steel Mithril Food Timber Mounts Gold
 Expected production 0 200 144 0 0 0 0 2000
 Current stores 0 1819 586 0 0 0 0 -

Barad Ungol Location : @ 3224 in Mountains Climate is Cool
 Size : Camp Fortifications : None Loyalty : 100 Docks : None Hidden ? : No Sieged ? : No
 Surplus Product Leather Bronze Steel Mithril Food Timber Mounts Gold
 Expected production 0 399 252 0 0 0 0 2900
 Current stores 0 3100 1025 0 0 0 0 -
 Foreign characters reported in the hex : **Skargnakh.**

Bareketta Location : @ 1106 in Hills & Rough Climate is Cool
 Size : Major Town Fortifications : Tower Loyalty : 82 Docks : None Hidden ? : No Sieged ? : No
 Surplus Product Leather Bronze Steel Mithril Food Timber Mounts Gold
 Expected production 0 0 112 0 0 182 0 1200
 Current stores 0 0 456 0 0 188 0 -

Bergfried Location : @ 2021 in Mountains Climate is Cold
 Size : Village Fortifications : None Loyalty : 81 Docks : None Hidden ? : No Sieged ? : No
 Surplus Product Leather Bronze Steel Mithril Food Timber Mounts Gold
 Expected production 0 0 38 14 0 0 0 1080
 Current stores 0 0 156 309 0 0 0 -

Bree Location : @ 1409 in Mixed Forest Climate is Mild
 Size : Major Town Fortifications : Tower Loyalty : 91 Docks : None Hidden ? : No Sieged ? : No
 Surplus Product Leather Bronze Steel Mithril Food Timber Mounts Gold
 Expected production 0 0 0 0 144 43 0 0
 Current stores 0 0 0 0 309 44 0 -

Caer Can Location : @ 0507 in Mixed Forest Climate is Mild
 Size : Village Fortifications : None Loyalty : 81 Docks : None Hidden ? : No Sieged ? : No
 Surplus Product Leather Bronze Steel Mithril Food Timber Mounts Gold
 Expected production 0 0 0 0 670 274 0 0
 Current stores 0 0 0 0 1436 282 0 -

Calambria Location : @ 0711 in Hills & Rough Climate is Mild
 Size : Village Fortifications : None Loyalty : 66 Docks : None Hidden ? : No Sieged ? : No
 Surplus Product Leather Bronze Steel Mithril Food Timber Mounts Gold
 Expected production 130 0 0 0 0 0 7 1700
 Current stores 920 0 0 0 0 0 15 -

Cameth Brin Location : @ 2008 in Mixed Forest Climate is Cool
 Size : Village Fortifications : None Loyalty : 37 Docks : None Hidden ? : No Sieged ? : No
 Surplus Product Leather Bronze Steel Mithril Food Timber Mounts Gold
 Expected production 0 0 0 0 374 102 0 0
 Current stores 0 0 0 0 803 105 0 -

Caras Celairnen Location : @ 0907 in Open Plains Climate is Cool
 Size : Village Fortifications : Tower Loyalty : 80 Docks : None Hidden ? : No Sieged ? : No
 Surplus Product Leather Bronze Steel Mithril Food Timber Mounts Gold
 Expected production 358 0 0 0 422 0 26 0
 Current stores 2672 0 0 0 907 0 54 -

Caras Fornen Location : @ 1006 in Hills & Rough Climate is Cool
 Size : Village Fortifications : Tower Loyalty : 78 Docks : None Hidden ? : No Sieged ? : No
 Surplus Product Leather Bronze Steel Mithril Food Timber Mounts Gold
 Expected production 0 0 0 0 1043 90 0 1300
 Current stores 0 0 0 0 2241 93 0 -

Cargash Location : @ 1806 in Open Plains Climate is Cool
 Size : Camp Fortifications : Fort Loyalty : 91 Docks : None Hidden ? : No Sieged ? : No
 Surplus Product Leather Bronze Steel Mithril Food Timber Mounts Gold
 Expected production 144 0 0 0 632 0 72 0
 Current stores 1074 0 0 0 1358 0 150 -

Ceber Fanuin Location : @ 2915 in Mixed Forest Climate is Mild
 Size : Major Town Fortifications : Tower Loyalty : 90 Docks : None Hidden ? : No Sieged ? : No
 Surplus Product Leather Bronze Steel Mithril Food Timber Mounts Gold
 Expected production 0 0 0 0 104 112 0 1300
 Current stores 0 0 0 0 224 115 0 -

Culwic Location : @ 0707 in Open Plains Climate is Mild
 Size : Town Fortifications : Tower Loyalty : 100 Docks : None Hidden ? : No Sieged ? : No
 Surplus Product Leather Bronze Steel Mithril Food Timber Mounts Gold
 Expected production 281 0 0 0 400 0 5 0
 Current stores 1989 0 0 0 857 0 10 -

Dana Car Location : @ 0607 in Mountains Climate is Cool
 Size : Village Fortifications : None Loyalty : 69 Docks : None Hidden ? : No Sieged ? : No
 Surplus Product Leather Bronze Steel Mithril Food Timber Mounts Gold
 Expected production 0 0 128 16 0 0 0 1200
 Current stores 0 0 520 272 0 0 0 -

Dea Valantis Location : @ 0911 in Hills & Rough Climate is Mild
 Size : Village Fortifications : None Loyalty : 83 Docks : None Hidden ? : No Sieged ? : No
 Surplus Product Leather Bronze Steel Mithril Food Timber Mounts Gold
 Expected production 0 0 0 0 0 266 7 1900
 Current stores 0 0 0 0 0 274 15 -

Deluvia Location : @ 1322 in Mixed Forest Climate is Mild
 Size : Village Fortifications : None Loyalty : 74 Docks : None Hidden ? : No Sieged ? : No
 Surplus Product Leather Bronze Steel Mithril Food Timber Mounts Gold
 Expected production 0 0 88 0 338 137 0 0
 Current stores 0 0 360 0 729 141 0 -

Di-Irsia Location : @ 2125 in Shore/Plains Climate is Warm
 Size : Village Fortifications : None Loyalty : 73 Docks : None Hidden ? : No Sieged ? : No
 Surplus Product Leather Bronze Steel Mithril Food Timber Mounts Gold
 Expected production 112 0 0 0 992 0 16 0
 Current stores 728 0 0 0 2127 0 33 -

Dol Arboria Location : @ 2418 in Mixed Forest Climate is Mild
 Size : Village Fortifications : None Loyalty : 81 Docks : None Hidden ? : No Sieged ? : No
 Surplus Product Leather Bronze Steel Mithril Food Timber Mounts Gold
 Expected production 0 0 0 0 439 238 0 0
 Current stores 0 0 0 0 943 245 0 -

Dolor Doloris Location : @ 0813 in Mountains Climate is Cool
 Size : Village Fortifications : None Loyalty : 83 Docks : None Hidden ? : No Sieged ? : No
 Surplus Product Leather Bronze Steel Mithril Food Timber Mounts Gold
 Expected production 0 0 104 24 0 0 0 1200
 Current stores 0 0 423 410 0 0 0 -

Dunharrow (Capital) Location : @ 2321 in Mountains Climate is Cold
 Size : City Fortifications : Citadel Loyalty : 100 Docks : None Hidden ? : No Sieged ? : No
 Surplus Product Leather Bronze Steel Mithril Food Timber Mounts Gold
 Expected production 0 0 24 1 0 0 0 1200
 Current stores 24490 0 3594 24 97090 100 6995 -

A small army bearing the banner of the Noldo Elves under Captain Masala is here.

Dwarf Gate Location : @ 2409 in Mountains Climate is Cold
 Size : Camp Fortifications : Tower Loyalty : 24 Docks : None Hidden ? : No Sieged ? : No
 Surplus Product Leather Bronze Steel Mithril Food Timber Mounts Gold
 Expected production 0 216 174 0 0 0 0 1680
 Current stores 0 2609 716 0 0 0 0 -

Eithel Thurin Location : @ 2630 in Hills & Rough Climate is Warm
 Size : Camp Fortifications : None Loyalty : 83 Docks : None Hidden ? : No Sieged ? : No
 Surplus Product Leather Bronze Steel Mithril Food Timber Mounts Gold
 Expected production 0 400 0 0 0 520 0 2800
 Current stores 0 3388 0 0 0 536 0 -

Eldanar Location : @ 1907 in Open Plains Climate is Cool
 Size : Camp Fortifications : Tower Loyalty : 76 Docks : None Hidden ? : No Sieged ? : No
 Surplus Product Leather Bronze Steel Mithril Food Timber Mounts Gold
 Expected production 360 0 0 0 904 0 40 0
 Current stores 2685 0 0 0 1943 0 83 -

Elnost Location : @ 2208 in Hills & Rough Climate is Cool
 Size : Camp Fortifications : Tower Loyalty : 77 Docks : None Hidden ? : No Sieged ? : No
 Surplus Product Leather Bronze Steel Mithril Food Timber Mounts Gold
 Expected production 0 0 0 0 464 128 0 3000
 Current stores 0 0 0 0 998 131 0 -

Elostirion Location : @ 0810 in Hills & Rough Climate is Mild
 Size : Major Town Fortifications : None Loyalty : 98 Docks : None Hidden ? : YES Sieged ? : No
 Surplus Product Leather Bronze Steel Mithril Food Timber Mounts Gold
 Expected production 72 0 0 0 0 0 32 1500
 Current stores 510 0 0 0 0 0 67 -

Fennas Drúin Location : @ 1910 in Open Plains Climate is Cool
 Size : Major Town Fortifications : None Loyalty : 18 Docks : None Hidden ? : No Sieged ? : No
 Surplus Product Leather Bronze Steel Mithril Food Timber Mounts Gold
 Expected production 182 0 0 0 106 0 19 0
 Current stores 1362 0 0 0 228 0 39 -

Fitghard Location : @ 4121 in Mountains Climate is Cool
 Size : Major Town Fortifications : None Loyalty : 71 Docks : None Hidden ? : No Sieged ? : No
 Surplus Product Leather Bronze Steel Mithril Food Timber Mounts Gold
 Expected production 0 60 20 0 0 0 0 1400
 Current stores 0 480 130 0 0 0 0 -

Fleak Location : @ 1507 in Hills & Rough Climate is Cool
 Size : Camp Fortifications : None Loyalty : 81 Docks : None Hidden ? : No Sieged ? : No
 Surplus Product Leather Bronze Steel Mithril Food Timber Mounts Gold
 Expected production 224 180 0 0 0 0 0 1400
 Current stores 1671 1637 0 0 0 0 0 -

Forlond Location : @ 0408 in Shore/Plains Climate is Mild
 Size : Major Town Fortifications : Fort Loyalty : 100 Docks : Harbor Hidden ? : No Sieged ? : No
 Surplus Product Leather Bronze Steel Mithril Food Timber Mounts Gold
 Expected production 166 0 0 0 238 0 22 0
 Current stores 1175 0 0 0 511 0 46 -

Fornost Erain Location : @ 1407 in Hills & Rough Climate is Cool
 Size : City Fortifications : Fort Loyalty : 100 Docks : None Hidden ? : No Sieged ? : No
 Surplus Product Leather Bronze Steel Mithril Food Timber Mounts Gold
 Expected production 0 0 0 0 0 85 2 1700
 Current stores 0 0 0 0 0 87 5 -

Freawul Location : @ 1922 in Mountains Climate is Cold
 Size : Major Town Fortifications : None Loyalty : 80 Docks : None Hidden ? : No Sieged ? : No
 Surplus Product Leather Bronze Steel Mithril Food Timber Mounts Gold
 Expected production 0 72 0 7 0 0 0 1740
 Current stores 1 826 0 168 0 0 0 -

Galenros Location : @ 0808 in Shore/Plains Climate is Mild
 Size : Village Fortifications : None Loyalty : 87 Docks : None Hidden ? : No Sieged ? : No
 Surplus Product Leather Bronze Steel Mithril Food Timber Mounts Gold
 Expected production 274 0 0 0 274 0 7 0
 Current stores 1939 0 0 0 587 0 15 -

Harnalda Location : @ 2010 in Open Plains Climate is Cool
 Size : Camp Fortifications : Tower Loyalty : 82 Docks : None Hidden ? : No Sieged ? : No
 Surplus Product Leather Bronze Steel Mithril Food Timber Mounts Gold
 Expected production 336 0 0 0 432 0 64 0
 Current stores 2507 0 0 0 929 0 133 -

High Road Location : @ 1609 in Hills & Rough Climate is Mild
 Size : Major Town Fortifications : Castle Loyalty : 68 Docks : None Hidden ? : No Sieged ? : No
 Surplus Product Leather Bronze Steel Mithril Food Timber Mounts Gold
 Expected production 86 0 44 0 320 0 0 0
 Current stores 609 0 179 0 687 0 0 -

Hodron Location : @ 3925 in Shore/Plains Climate is Hot
 Size : Camp Fortifications : None Loyalty : 23 Docks : None Hidden ? : No Sieged ? : No
 Surplus Product Leather Bronze Steel Mithril Food Timber Mounts Gold
 Expected production 192 0 0 0 344 0 32 0
 Current stores 1308 0 0 0 536 0 142 -

Iasanda Location : @ 1323 in Mixed Forest Climate is Mild
 Size : Village Fortifications : None Loyalty : 88 Docks : None Hidden ? : No Sieged ? : No
 Surplus Product Leather Bronze Steel Mithril Food Timber Mounts Gold
 Expected production 202 0 0 0 360 79 0 0
 Current stores 1634 0 0 0 777 81 0 -

Imladris Location : @ 2209 in Hills & Rough Climate is Warm
 Size : City Fortifications : Castle Loyalty : 90 Docks : None Hidden ? : No Sieged ? : No
 Surplus Product Leather Bronze Steel Mithril Food Timber Mounts Gold
 Expected production 0 0 0 0 0 78 20 2100
 Current stores 4021 0 1988 0 0 336 0 -

Foreign characters reported in the hex : - **Throkmaw**.

An army bearing the banner of the Noldo Elves under Hero Targon is here.

Lanthir Lamath Location : @ 0508 in Mixed Forest Climate is Mild
 Size : Village Fortifications : None Loyalty : 100 Docks : None Hidden ? : No Sieged ? : No
 Surplus Product Leather Bronze Steel Mithril Food Timber Mounts Gold
 Expected production 0 232 0 0 1246 101 0 0
 Current stores 0 2115 0 0 2672 104 0 -

Lesra Location : @ 4122 in Open Plains Climate is Hot
 Size : Camp Fortifications : None Loyalty : 23 Docks : None Hidden ? : No Sieged ? : No
 Surplus Product Leather Bronze Steel Mithril Food Timber Mounts Gold
 Expected production 224 0 0 0 792 0 32 0
 Current stores 1477 0 0 0 1846 0 32 -

Lindoln Location : @ 4212 in Mixed Forest Climate is Cool
 Size : Camp Fortifications : None Loyalty : 75 Docks : None Hidden ? : No Sieged ? : No
 Surplus Product Leather Bronze Steel Mithril Food Timber Mounts Gold
 Expected production 0 0 70 0 624 120 0 0
 Current stores 0 0 284 0 1341 124 0 -

Lond Daer Enehdh Location : @ 1319 in Shore/Plains Climate is Mild
 Size : Village Fortifications : Tower Loyalty : 83 Docks : None Hidden ? : No Sieged ? : No
 Surplus Product Leather Bronze Steel Mithril Food Timber Mounts Gold
 Expected production 108 0 0 0 655 0 36 0
 Current stores 764 0 0 0 1405 0 75 -

Lâgari Orath Location : @ 4425 in Open Plains Climate is Hot
 Size : Town Fortifications : None Loyalty : 21 Docks : None Hidden ? : No Sieged ? : YES
 Surplus Product Leather Bronze Steel Mithril Food Timber Mounts Gold
 Expected production 278 0 0 0 442 0 14 0
 Current stores 2875 0 0 0 209 0 90 -

Malborn High Location : @ 1406 in Hills & Rough Climate is Cool
 Size : Camp Fortifications : Tower Loyalty : 86 Docks : None Hidden ? : No Sieged ? : No
 Surplus Product Leather Bronze Steel Mithril Food Timber Mounts Gold
 Expected production 144 0 0 0 0 432 0 1600
 Current stores 1074 0 0 0 0 445 0 -

Minas Ithil Location : @ 3124 in Mountains Climate is Cool
 Size : Major Town Fortifications : Tower Loyalty : 100 Docks : None Hidden ? : No Sieged ? : No
 Surplus Product Leather Bronze Steel Mithril Food Timber Mounts Gold
 Expected production 0 116 0 16 0 0 0 1700
 Current stores 0 1047 0 112 0 0 0 -

Foreign characters reported in the hex : **Davos - Fillipae - Ufgamog.**
An army bearing the banner of Southern Gondor under General Y'beth is here.

Mithlond-East Location : @ 0710 in Hills & Rough Climate is Mild
 Size : Town Fortifications : Fort Loyalty : 100 Docks : Harbor Hidden ? : No Sieged ? : No
 Surplus Product Leather Bronze Steel Mithril Food Timber Mounts Gold
 Expected production 135 0 0 0 0 265 0 3000
 Current stores 956 0 0 0 0 273 0 -

Mithlond-West Location : @ 0708 in Shore/Plains Climate is Mild
 Size : City Fortifications : Fort Loyalty : 100 Docks : Port Hidden ? : No Sieged ? : No
 Surplus Product Leather Bronze Steel Mithril Food Timber Mounts Gold
 Expected production 91 0 0 0 237 0 24 0
 Current stores 644 0 0 0 508 0 50 -

Nothva Rhaglaw Location : @ 1908 in Mixed Forest Climate is Cool
 Size : Village Fortifications : None Loyalty : 91 Docks : None Hidden ? : No Sieged ? : No
 Surplus Product Leather Bronze Steel Mithril Food Timber Mounts Gold
 Expected production 0 0 0 0 717 282 0 0
 Current stores 0 0 0 0 1540 291 0 -

Olbamari Location : @ 3329 in Mountains Climate is Cool
 Size : City Fortifications : Castle Loyalty : 89 Docks : None Hidden ? : No Sieged ? : No
 Surplus Product Leather Bronze Steel Mithril Food Timber Mounts Gold
 Expected production 0 48 58 0 0 0 0 1400
 Current stores 0 596 236 0 0 0 0 -

Ostwacht Location : @ 1007 in Hills & Rough Climate is Cool
 Size : Village Fortifications : None Loyalty : 74 Docks : None Hidden ? : No Sieged ? : No
 Surplus Product Leather Bronze Steel Mithril Food Timber Mounts Gold
 Expected production 64 0 0 0 0 0 26 1300
 Current stores 477 0 0 0 0 0 54 -

Penmorva Location : @ 2007 in Hills & Rough Climate is Cool
 Size : Major Town Fortifications : Tower Loyalty : 100 Docks : None Hidden ? : No Sieged ? : No
 Surplus Product Leather Bronze Steel Mithril Food Timber Mounts Gold
 Expected production 0 0 116 0 0 0 6 1000
 Current stores 0 0 472 0 0 0 12 -

Rendûl Location : @ 2225 in Shore/Plains Climate is Warm
 Size : Major Town Fortifications : None Loyalty : 51 Docks : None Hidden ? : No Sieged ? : No
 Surplus Product Leather Bronze Steel Mithril Food Timber Mounts Gold
 Expected production 184 0 0 0 776 0 12 0
 Current stores 1191 0 0 0 1657 0 24 -

Salemar Location : @ 2025 in Shore/Plains Climate is Warm
 Size : Village Fortifications : None Loyalty : 78 Docks : None Hidden ? : No Sieged ? : No
 Surplus Product Leather Bronze Steel Mithril Food Timber Mounts Gold
 Expected production 272 0 0 0 936 0 16 0
 Current stores 1761 0 0 0 2000 0 33 -

Schatz Location : @ 3404 in Open Plains Climate is Polar
 Size : Town Fortifications : Fort Loyalty : 89 Docks : None Hidden ? : No Sieged ? : No
 Surplus Product Leather Bronze Steel Mithril Food Timber Mounts Gold
 Expected production 11 0 0 0 55 0 3 0
 Current stores 93 0 0 0 131 0 6 -

Sudûri Location : @ 1219 in Shore/Plains Climate is Mild
 Size : Town Fortifications : Fort Loyalty : 48 Docks : Harbor Hidden ? : No Sieged ? : No
 Surplus Product Leather Bronze Steel Mithril Food Timber Mounts Gold
 Expected production 162 0 0 0 238 0 22 0
 Current stores 1147 0 0 0 511 0 46 -

Tarmabar Location : @ 1109 in Hills & Rough Climate is Mild
 Size : Town Fortifications : Tower Loyalty : 98 Docks : None Hidden ? : No Sieged ? : No
 Surplus Product Leather Bronze Steel Mithril Food Timber Mounts Gold
 Expected production 0 0 180 0 0 0 43 2300
 Current stores 0 0 732 0 0 0 90 -

Tharbad Location : @ 1614 in Shore/Plains Climate is Mild
 Size : Major Town Fortifications : Fort Loyalty : 91 Docks : Harbor Hidden ? : No Sieged ? : No
 Surplus Product Leather Bronze Steel Mithril Food Timber Mounts Gold
 Expected production 162 0 0 0 220 0 18 0
 Current stores 1147 0 0 0 471 0 37 -

Thuin Boid Location : @ 2009 in Mixed Forest Climate is Cool
 Size : Camp Fortifications : Tower Loyalty : 92 Docks : None Hidden ? : No Sieged ? : No
 Surplus Product Leather Bronze Steel Mithril Food Timber Mounts Gold
 Expected production 0 0 0 0 384 224 0 2400
 Current stores 0 0 0 0 826 231 0 -
 Foreign characters reported in the hex : **Galadriel.**

Tirthon Location : @ 2109 in Mixed Forest Climate is Cool
 Size : Village Fortifications : Tower Loyalty : 90 Docks : None Hidden ? : No Sieged ? : No
 Surplus Product Leather Bronze Steel Mithril Food Timber Mounts Gold
 Expected production 0 0 0 0 646 314 0 0
 Current stores 0 0 0 0 1388 324 0 -

Traditional Location : @ 3413 in Open Plains Climate is Cool
 Size : Camp Fortifications : None Loyalty : 62 Docks : None Hidden ? : No Sieged ? : No
 Surplus Product Leather Bronze Steel Mithril Food Timber Mounts Gold
 Expected production 192 0 0 0 720 0 24 0
 Current stores 1200 0 0 0 1518 0 49 -

Tyrn Gorthad Location : @ 1410 in Hills & Rough Climate is Mild
 Size : Village Fortifications : Tower Loyalty : 87 Docks : None Hidden ? : No Sieged ? : No
 Surplus Product Leather Bronze Steel Mithril Food Timber Mounts Gold
 Expected production 0 232 112 0 0 0 0 1800
 Current stores 0 2109 456 0 0 0 0 -

ARMIES AND NAVIES

Army Commander : Captain Masala Location : @ 2321 in Mountains Climate is Cold
 Army morale : 24 Warships : 0 Transports : 0 (4) Travel mode : Normal
 Troops Training Weapon Armor # Troops Troop Type
 Mixed Elven horseriders w/broadswords 25 60 60 600 Heavy Cavalry
 Baggage Train Leather Bronze Steel Mithril
 Weapons - 0 0 0
 Armor 0 0 0
 Food 1102 Low Supplies !!
 War machines 0
 The City/Citadel of Dunharrow flying the flag of the Noldo Elves is here.

Army Commander : Hero Targon Location : @ 2209 in Hills & Rough Climate is Warm
 Army morale : 26 Warships : 0 Transports : 0 (14) Travel mode : Normal
 Troops Training Weapon Armor # Troops Troop Type
 Mixed Elven horseriders w/broadswords 26 60 60 2100 Heavy Cavalry
 Baggage Train Leather Bronze Steel Mithril
 Weapons - 0 0 0
 Armor 0 0 0
 Food 541 Low Supplies !!
 War machines 66
 Characters traveling with army : - Gimforn.
 The City/Castle of Imladris flying the flag of the Noldo Elves is here.

Army Commander : Captain Ulbar Location : @ 4327 in Open Plains Climate is Hot
 Army morale : 35 Warships : 0 Transports : 0 (9) Travel mode : Normal
 Troops Training Weapon Armor # Troops Troop Type
 Mixed Elven horseriders w/broadswords 35 60 60 1211 Heavy Cavalry
 Baggage Train Leather Bronze Steel Mithril
 Weapons - 0 0
 Armor 0 0
 Food 0 Out of Food !!
 War machines 0

The City of Korondë flying the flag of the Blind Sorcerer is here.
An army bearing the banner of the Blind Sorcerer under Lord Marshal Salamder is here.

Army Commander : Hero Widfara Location : @ 4022 in Open Plains Climate is Hot
 Army morale : 23 Warships : 0 Transports : 0 (12) Travel mode : Normal
 Troops Training Weapon Armor # Troops Troop Type
 Mixed Elven horseriders w/broadswords 26 60 60 1655 Heavy Cavalry
 Baggage Train Leather Bronze Steel Mithril
 Weapons - 0 0
 Armor 0 0
 Food 11615
 War machines 0

The Village of Esgalduin flying the flag of the Haradwaith is here.

COMPANY COMMANDERS :

Commander Gildor Location : @ 3423 Traveling with him are : Hardor.

MARKET PRICES

Product	Leather	Bronze	Steel	Mithril	Food	Timber	Mounts
Market units available	45092	48744	8809	1642	245914	17555	4511
Purchase at market price/unit	8	8	29	168	3	17	53
Sell to market price/unit	5	5	18	103	2	10	33

MISCELLANEOUS

Maintenance Costs expected next turn are:	Totals for Nation:	Stores	Production
Armies/Navies : 34896	Leather	71420	5783
Pop Centers : 28500	Bronze	22274	2435
Characters : 36240	Steel	12313	1664
	Mithril	1295	78
Total : 99636	Food	142474	21512
	Timber	4999	4508
Current Tax rate : 19%	Mounts	8707	795
Revenue expected next turn : 103650 (+4014)			
Current Gold reserve : 260674			

Ships have been left anchored at the following locations:

20 warships at hex 0708
 10 transports at hex 0708

You have the following double agents:

Baxter of the Dunlendings @ 3423

Double agent Baxter reports he was ordered to assassinate a character. Lord Varys was assassinated.

Daonghlas of the Dunlendings @ 3108

Double agent Daonghlas reports lack of Food may have affected army movement.

Double agent Daonghlas reports lack of Food restricted the army morale.

Double agent Daonghlas reports he was ordered to create a camp. He was not able to create the camp because there was insufficient populace.

Double agent Daonghlas reports he was ordered to force march the army. He accepted the forced march orders. Morale was reduced.

Goldwine Frec of the Long Rider @ 4215

Double agent Goldwine Frec reports he was ordered to remove the harbor. The harbor was removed at Tol Burûth.

Double agent Goldwine Frec reports he was ordered to transport by the caravans. 20000 Gold (+10%) transported from Tol Burûth.

Double agent Goldwine Frec reports he had a special encounter.

Jenna of the Éothraim @ 3423

Double agent Jenna reports she was ordered to scout for any characters. A scout for characters was attempted. Found: Amroth. Ejenna. Shabla. Hannae. Issaria. Ioanna. Dervorin. Grakus. Portia. Plautius. Urthel. Nothing else was reported at this time.

Lugronk of the Long Rider @ 3921

Double agent Lugronk reports he was ordered to refuse all personal challenges.

Double agent Lugronk reports he was ordered to kidnap a character. Marhwini was kidnaped.

Double agent Lugronk reports he moved with the company to 3921.

Tall Boy of the Dwarves @ 3423

Double agent Tall Boy reports he was ordered to assassinate a character. Drago was assassinated.

You have the following hostages:

Paddro of Rhudaur is held by Elladan at 3423 - No Gold ransom demanded at this time.

Cykur of the Witch-king is held by Gildor at 3423 - No Gold ransom demanded at this time.

Ulwith of the Dragon Lord is held by Gildor at 3423 - No Gold ransom demanded at this time.

Martin of the Dunlendings is held by Machiko at 3423 - No Gold ransom demanded at this time.

Morgan of the Dunlendings is held by Machiko at 3423 - No Gold ransom demanded at this time.

Ezraka of the Witch-king is held by Ocampo at 3423 - No Gold ransom demanded at this time.

You possess the following artifacts:

Name of artifact	Item	#	Latent	Alignment	Known Powers
Ring of Iron Magic	Ring	3	Yes	Evil	Increases Mage Rank by 30.
Ring of Barahir	Ring	5	Yes	Good	Increases Command Rank by 30.
Lorglîn	Ring	8	Yes	None	Increases Mage Rank by 20.
Vilya	Ring	11	Yes	None	Increases Mage Rank by 50.
The One Ring	Ring	14	No	Evil	Will end game if brought to hex 3423!
Tinculin	Harp	15	Yes	None	Increases Mage Rank by 45.
Horn of Fear	Horn	17	No	None	COMBAT - Increases damage by 500 points.
Mallorn Staff	Staff	26	Yes	None	Increases Mage Rank by 25.
Orb of Dark Seeing	Orb	34	Yes	Evil	Increases Mage Rank by 20.
Miramarth	Jewel	39	Yes	Evil	Increases Agent Rank by 15.
Collar of Might	Collar	42	Yes	None	Increases Mage Rank by 35.
Cloak of the Heavens	Cloak	43	Yes	None	Increases Agent Rank by 15.
Cloak of the Abyss	Cloak	45	Yes	None	Increases Stealth Rank by 40.
Belt of Durin	Belt	47	Yes	None	Increases Command Rank by 20.
Thôlogaer Ciryatano	Helm	48	Yes	None	Increases Mage Rank by 30.
Morgul Plate	Armor	52	Yes	Evil	Increases Command Rank by 10.
Durin's Armor/Shield	Armor	60	Yes	None	Increases Command Rank by 20.
Dragon Helm/Armor	Armor	62	Yes	Evil	Increases Mage Rank by 30.
Ulûkai	Jewel	67	Yes	Evil	Increases Command Rank by 25.
Thrakurghash	Scimitar	68	No	Evil	COMBAT - Increases damage by 500 points.
Nallagurth	Mace	86	No	Evil	COMBAT - Increases damage by 750 points.
Helkaluin	Sword	90	No	Good	COMBAT - Increases damage by 1250 points.
Culok	Bow	105	No	None	COMBAT - Increases damage by 500 points.
Believer's Bane	Bow	111	No	None	COMBAT - Increases damage by 500 points.
Ring of Bleeding	Ring	154	Yes	Evil	Increases Mage Rank by 35.
Pectoral	Amulet	157	Yes	None	Increases Emissary Rank by 30.
Ancaruin	Sword	168	No	Good	COMBAT - Increases damage by 2250 points.

Belthronding	Bow 174	No	Good	COMBAT - Increases damage by 2250 points.
E Mere Vardo	Tome 188	Yes	Good	Increases Mage Rank by 10.
Staff of the Wanderer	Staff 190	Yes	Good	Increases Mage Rank by 20.

You have hidden the following additional artifacts:

None

NATION MESSAGES

The loyalty was influenced from the efforts or presence of Galadriel at Thuin Boid.

The loyalty was influenced from the efforts or presence of Shelob at Olbamarl.

The loyalty was influenced/reduced at Carvarad.

The loyalty was influenced/reduced at Carvarad.

Carvarad is no longer under our control.

The loyalty was influenced/reduced at Fennas Drúnin.

The loyalty was influenced/reduced at Fennas Drúnin.

The loyalty was influenced/reduced at Fennas Drúnin.

There are rumors of an assassination attempt involving Tall Boy and Drago.

There are rumors of an assassination attempt involving Sarah and Borondir.

There are rumors of a kidnap attempt involving Lugronk and Marhwini.

ENCOUNTER MESSAGES

None

COMBAT MESSAGES

Battle at 4425

In the Hot climate of the Open Plains of 4425, a conflict took place in the early hours of the evening under an overcast sky.

At the head of a rebellious army rode **Commander Ulbar** of the nation of the Noldo Elves. The mount on which he rode moved with trepidation to the center of the battle lines. Behind him the forming ranks were filled with:

Troops	Weapons	Armor	Formations
1355 Mixed Elven horseriders w/broadswords	steel	steel	ragged ranks

The Major Town of Lâgari Orath flying the flag of the Long Rider is situated in the Open Plains here.

After the battle.... Ulbar's forces found no enemy armies to fight.

The battle for Lâgari Orath was over even before it began. The attackers were so numerous and strong that the defending militia had little chance to save themselves. The battle was over in just a few hours!!

After the attack on the population center.... Ulbar's army survived the attack on the Major Town, but suffered minor losses. Ulbar appeared to have survived. The Major Town has been reduced to a Town. The Town has been under siege/attack this turn. The Town now flies the flag of the Noldo Elves.

SPECIAL MESSAGES

FREE TURNS! Do you have any friends that would enjoy playing ME-PBM? MEPBM will credit you with a free turn for each NEW player that signs up and mentions your name (New players can only mention one name). If you would like to start a game with several friends, just let us know! Please try to collect all names & required funds, and mail together, when joining with friends. Current player set-ups are: £5.00, new player registrations are: £ 10.00

Front Sheet

The FrontSheet is now in the main body of the email of each turn you get. This also includes nations available, new games starting up, generic message from us about other aspects of the game as well as game reports. It also has your balance and the conta

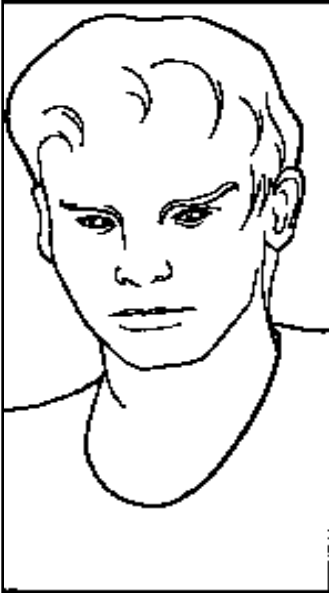
ME-PBM Forum and ME-PBM Mailing List

This is to let you know that we have started an ME-PBM forum on our web site. The address for the web site is www.MiddleEarthGames.com. From there, you can go to links that allow you to log into the message board and to subscribe to the mailing list.

ORDERS GIVEN

Character	Order #	Order Code	Additional Information.....
Arassuil	325	NatSell	fo 90
Arassuil	520	InfYour	
Círdan	930	ScoChar	
Círdan	810	MovChar	3423
Duinhir	215	RfsPers	
Duinhir	810	MovChar	3423
Elladan	810	MovChar	3423
Elladan	930	ScoChar	
Elrond	990		
Elrond	990		
Gildor	215	RfsPers	
Gildor	610	GrdChar	elron
Gimforn	785	JnArmy	targo
Gimforn	925	Recon	
Hannae	500	Double	baxte
Hannae	215	RfsPers	
Hardor	215	RfsPers	
Hardor	610	GrdChar	elron
Ioanna	215	RfsPers	
Ioanna	500	Double	jenna
Issaria	215	RfsPers	
Issaria	500	Double	tall
Machiko	215	RfsPers	
Machiko	610	GrdChar	elron
Masala	400	HvCvlry	500 st st
Masala	325	NatSell	fo 90
Mea Satina	525	InfOthr	
Mea Satina	810	MovChar	3322
Mustari	525	InfOthr	
Mustari	810	MovChar	3322
Ocampo	215	RfsPers	
Ocampo	610	GrdChar	elron
Targon	400	HvCvlry	500 st st
Targon	440	MakWrMa	66
Ulbar	255	CptrPop	ch
Ulbar	860	ForcMar	sw sw sw se sw se ^ ^ ^ ^ ^ ^ ^ no
Valandil	520	InfYour	
Valandil	810	MovChar	3224
Widfara	860	ForcMar	se se se sw sw w w ^ ^ ^ ^ ^ ^ ^ no
Widfara	925	Recon	
Yenessei	215	RfsPers	
Yenessei	610	GrdChar	elron

Arassuil



Ranks : Command 0 Agent 0 Emissary 58 Mage 0
 Health 100 Stealth 0 Challenge 29
 Artifacts : None
 Spells (+0) : None

Arassuil was located in the Mountains at 2321.

He was ordered to have the nation sell to the caravans. The stores sold was changed because the total product sold was more than the market purchase limit. 25360 Food were sold for 50720 Gold.

He was ordered to influence the population center loyalty. The loyalty was influenced/improved at Dunharrow.

He is currently in the Mountains at 2321. The City/Citadel of Dunharrow flying the flag of the Noldo Elves is here.

Círdan



Ranks : Command 44 Agent 70 Emissary 65 Mage 61 (136)
 Health 100 Stealth 25 Challenge 193
 Artifacts : #8 Lorglín #26 Mallorn Staff #90 Helkaluiv #188 E Mere Vardo
 #190 Staff of the Wanderer
 Spells(+75) : #4 Major Heal(75) #102 Barriers(88) #108 Blessings(54)
 #310 Major Return(59) #408 Perceive Nation...(88) #412 Research Artifact(70)
 #418 Locate Artifact(70) #428 Locate Artifact...(87) #502 Weakness(77)
 #504 Sickness(65) #506 Curses(60)

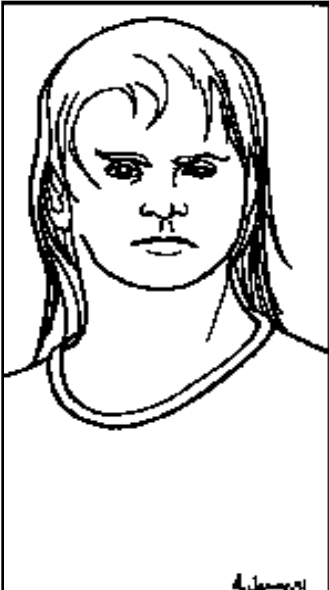
Círdan was located in the Desert Wastes at 3324.

He was ordered to move. He accepted the movement orders.

He was ordered to scout for any characters. A scout for characters was attempted. Found: Amroth. Ejenna. Shabla. Shortsarse. Dervorin. Grakus. Portia. Balkhmog - Dark Servant Male. Baxter. Sarah. Undine. Plautius. Nearseeker. Tyrion. Jenna. Aerandir. Wauthal. Dorian. Hagrid. Gamling. Herubrand. Finch. Urthel. Baragund. Bubblicious. Brytta. Dirhael. One or more reports may be incorrect. Nothing else was reported at this time.

He is currently in the Mountains at 3423. The City of Barad-dûr flying the flag of the Dunlendings is here.

Duinhir



Ranks : Command 30 Agent 0 Emissary 0 Mage 0
 Health 100 Stealth 40 Challenge 30
 Artifacts : None
 Spells (+0) : None

Duinhir was located in the Open Plains at 3920.

He was ordered to refuse all personal challenges.

He was ordered to move. He accepted the movement orders.

He is currently in the Mountains at 3423. The City of Barad-dûr flying the flag of the Dunlendings is here.

Elladan



Ranks : Command 67 (137) Agent 77 Emissary 0 Mage 28
 Health 100 Stealth 25 Challenge 203
 Artifacts : #5 Ring of Barahir #47 Belt of Durin #60 Durin's Armor/Shield
 #174 Belthronding
 Spells (+0) : #108 Blessings(50) #308 Capital Return(54)

Elladan was located in the Desert Wastes at 3424.

He was ordered to move. He accepted the movement orders.

He was ordered to scout for any characters. A scout for characters was attempted.
 Found: Amroth. Ejenna. Shabla. Shortsarse. Dervorin. Grakus. Bradbury. Portia. An
 unknown Dark Servant Male. Baxter. Kjatan. Sarah. Undine. Plautius. Nearseeker. Tyrion.
 Jenna. Aerandir. Tall Boy. Wauthal. Dorian. Hagrid. Forensic. Gamling. Herubrand.
 Finch. Urthel. Baragund. Bubblicious. Brytta. Dirhael. One or more reports may be
 incorrect. Nothing else was reported at this time.

**He is currently in the Mountains at 3423. The City of Barad-dûr flying the flag of the
 Dunlendings is here.**

Elrond



Ranks : Command 40 Agent 0 Emissary 88 Mage 77 (237)
 Health 100 Stealth 25 Challenge 303
 Artifacts : #11 Vilya #14 The One Ring #15 Tinculin #42 Collar of Might
 #48 Thôlogaer Cir... #168 Ancaruin
 Spells(+160) #6 Greater Heal(94) #114 Barrier Walls(68) #314 Teleport(73)
 #402 Perceive Allegiance(95) #410 Divine Allegiance Forces(89)
 #415 Scry Area(100) #428 Locate Artifact True(80) #504 Sickness(77)
 #506 Curses(70)

Elrond was located in the Mountains at 3423.

He was ordered to dispose of The ONE RING. Continued efforts are needed.

He was ordered to dispose of The ONE RING. The ONE RING was thrown into Mount
 Doom!! There was a great roar and the mountain shook to its very core. The land for
 miles around trembled as dark towers fell, cities trembled, and great fissures divided
 the plains. Great fires leaped from the summit, lightning crackled through the skies,
 and heavy rains fell. Suddenly the minions of the Dark Lord cried in fear as their Dark
 Lord felt his power crumble. The cry was heard in the minds and hearts of all the Free
 Peoples...THE ONE RING HAS BEEN DESTROYED!!

**He is currently in the Mountains at 3423. The City of Barad-dûr flying the flag of the
 Dunlendings is here.**

Gildor



Ranks : Command 30 Agent 78 Emissary 37 (67) Mage 14
 Health 53 Stealth 25 Challenge 77
 Artifacts : #34 Orb of Dark Seeing #157 Pectoral
 Spells (+0) : #304 Fast Stride(57)

Gildor was located in the Mountains at 3423.

He was ordered to refuse all personal challenges.

He was ordered to guard a character. Elrond was guarded.

**He commands a company in the Mountains at 3423. The City of Barad-dûr flying the flag
 of the Dunlendings is here.**

Gimforn



Ranks : Command 38 Agent 0 Emissary 0 Mage 0
 Health 100 Stealth 0 Challenge 38
 Artifacts : None
 Spells (+0) : None

Gimforn was located in the Hills & Rough at 2209.
 He was ordered to join an army. He joined the army commanded by Targon.
 He was ordered to recon the area. A recon of the area was attempted. Foreign armies identified: None. See report below.
He is traveling with Targon in the Hills & Rough at 2209. The City/Castle of Imladris flying the flag of the Noldo Elves is here.

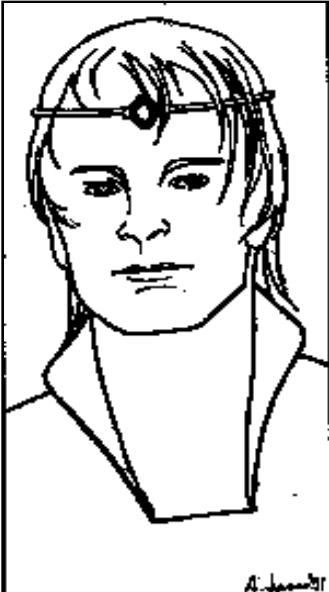
Hannae



Ranks : Command 0 Agent 0 Emissary 100 Mage 0
 Health 100 Stealth 0 Challenge 50
 Artifacts : #3 Ring of Iron Magic #52 Morgul Plate #67 Ulûkai
 #68 Thrakurghash #86 Nallagurth
 Spells (+0) : None

Hannae was located in the Mountains at 3423.
 She was ordered to refuse all personal challenges.
 She was ordered to recruit a double agent. Baxter is now our double agent.
She is traveling with Baragund of Haradwaith in the Mountains at 3423. The City of Barad-dûr flying the flag of the Dunlendings is here.

Hardor



Ranks : Command 10 Agent 69 Emissary 0 Mage 0
 Health 100 Stealth 0 (40) Challenge 63
 Artifacts : #17 Horn of Fear #45 Cloak of the Abyss
 Spells (+0) : None

Hardor was located in the Mountains at 3423.
 He was ordered to refuse all personal challenges.
 He was ordered to guard a character. Elrond was guarded.
He is traveling with Gildor in the Mountains at 3423. The City of Barad-dûr flying the flag of the Dunlendings is here.

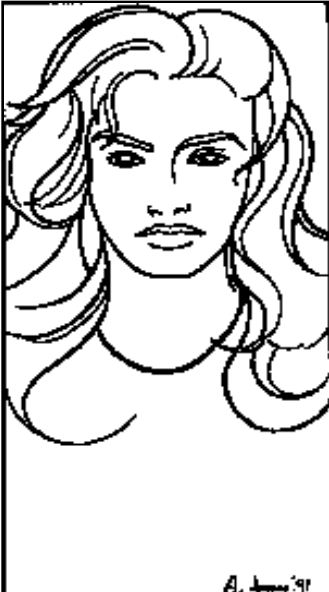
Ioanna



Ranks : Command 0 Agent 0 Emissary 100 Mage 0
 Health 100 Stealth 0 Challenge 50
 Artifacts : None
 Spells (+0) : None

Ioanna was located in the Mountains at 3423.
 She was ordered to refuse all personal challenges.
 She was ordered to recruit a double agent. Jenna is now our double agent.
She is currently in the Mountains at 3423. The City of Barad-dûr flying the flag of the Dunlendings is here.

Issaria



Ranks : Command 0 Agent 0 Emissary 100 Mage 0
 Health 100 Stealth 0 Challenge 50
 Artifacts : None
 Spells (+0) : None

Issaria was located in the Mountains at 3423.
 She was ordered to refuse all personal challenges.
 She was ordered to recruit a double agent. Tall Boy is now our double agent.
She is currently in the Mountains at 3423. The City of Barad-dûr flying the flag of the Dunlendings is here.

Machiko



Ranks : Command 10 Agent 70 (85) Emissary 0 Mage 0
 Health 100 Stealth 25 Challenge 75
 Artifacts : #39 Miramarth #43 Cloak of the Heavens #111 Believer's Bane
 Spells (+0) : None

Machiko was located in the Mountains at 3423.
 She was ordered to refuse all personal challenges.
 She was ordered to guard a character. Elrond was guarded. She captured Martin and thwarted his theft mission. Artifact(s) were discovered on Martin. She captured Morgan and thwarted his theft mission. Artifact(s) were discovered on Morgan.
She is traveling with Baragund of Haradwaith in the Mountains at 3423. The City of Barad-dûr flying the flag of the Dunlendings is here.

Masala



Ranks : Command 43 Agent 0 Emissary 0 Mage 0
 Health 100 Stealth 0 Challenge 43
 Artifacts : None
 Spells (+0) : None

Masala was located in the Mountains at 2321.

He was ordered to have the nation sell to the caravans. The stores sold was changed because the total product sold was more than the market purchase limit. 1438 Food were sold for 2876 Gold.

He was ordered to recruit some heavy cavalry. 500 Heavy Cavalry w/Steel weapons and Steel armor were recruited.

He commands an army in the Mountains at 2321. The City/Citadel of Dunharrow flying the flag of the Noldo Elves is here.

Mea Satina



Ranks : Command 0 Agent 0 Emissary 95 Mage 0
 Health 100 Stealth 0 Challenge 57
 Artifacts : #105 Culok
 Spells (+0) : None

Mea Satina was located in the Hills & Rough at 3723.

She was ordered to influence their population center loyalty. The loyalty was influenced/reduced at Dannedhir. Current loyalty is perceived to be marginal.

She was ordered to move. She accepted the movement orders.

She is currently in the Mountains at 3322. The Major Town of Lag-ujâkdâgûl flying the flag of the Dog Lord is here.

Mustari



Ranks : Command 0 Agent 0 Emissary 80 Mage 0
 Health 100 Stealth 34 Challenge 40
 Artifacts : #62 Dragon Helm/Armor #154 Ring of Bleeding
 Spells (+0) : None

Mustari was located in the Mountains at 3724.

She was ordered to influence their population center loyalty. The loyalty was influenced/reduced at Intyalë. Current loyalty is perceived to be rebellious.

She was ordered to move. She accepted the movement orders.

She is currently in the Mountains at 3322. The Major Town of Lag-ujâkdâgûl flying the flag of the Dog Lord is here.

Ocampo



Ranks : Command 10 Agent 72 Emissary 0 Mage 0
 Health 100 Stealth 36 Challenge 56
 Artifacts : None
 Spells (+0) : None

Ocampo was located in the Mountains at 3423.

He was ordered to refuse all personal challenges.

He was ordered to guard a character. Elrond was guarded.

He is traveling with Baragund of Haradwaith in the Mountains at 3423. The City of Barad-dûr flying the flag of the Dunlendings is here.

Targon



Ranks : Command 20 Agent 14 Emissary 0 Mage 0
 Health 100 Stealth 0 Challenge 32+
 Artifacts : None
 Spells (+0) : None

Targon was located in the Hills & Rough at 2209.

He was ordered to recruit some heavy cavalry. 500 Heavy Cavalry w/Steel weapons and Steel armor were recruited.

He was ordered to make some war machines. 66 war machines were constructed.

He commands an army in the Hills & Rough at 2209. The City/Castle of Imladris flying the flag of the Noldo Elves is here.

Ulbar



Ranks : Command 41 Agent 10 Emissary 0 Mage 0
 Health 100 Stealth 38 Challenge 42
 Artifacts : None
 Spells (+0) : None

Ulbar was located in the Open Plains at 4425.

He was ordered to capture the Major Town of Lâgari Orath. See Combat Messages.

Lack of Food may have affected army movement.

Lack of Food restricted the army morale.

He was ordered to force march the army. He accepted the forced march orders. Movement was delayed by evasive or non-(friendly/tolerant) forces. Movement was stopped by non-(friendly/tolerant) forces.

He commands an army in the Open Plains at 4327. The City of Korondë flying the flag of the Blind Sorcerer is here.

Valandil



Ranks : Command 0 Agent 0 Emissary 34 Mage 0
 Health 100 Stealth 0 Challenge 17
 Artifacts : None
 Spells (+0) : None

Valandil was located in the Mountains at 2321.

He was ordered to influence the population center loyalty. The loyalty was influenced/improved at Dunharrow.

He was ordered to move. He accepted the movement orders.

He is currently in the Mountains at 3224. The Camp of Barad Ungol flying the flag of the Noldo Elves is here.

Widfara



Ranks : Command 22 Agent 10 Emissary 0 Mage 0
 Health 100 Stealth 0 Challenge 23
 Artifacts : None
 Spells (+0) : None

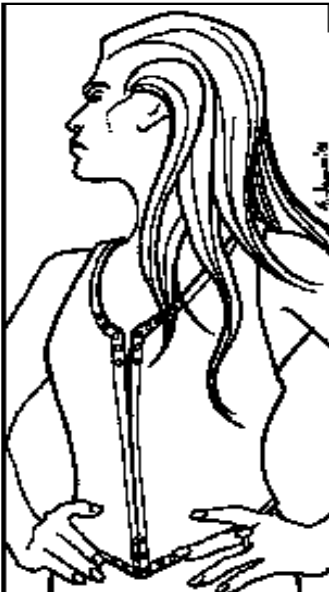
Widfara was located in the Shore/Plains at 4217.

He was ordered to force march the army. He accepted the forced march orders.

He was ordered to recon the area. A recon of the area was attempted. Foreign armies identified: None. See report below.

He commands an army in the Open Plains at 4022. The Village of Esgalduin flying the flag of the Haradwaith is here.

Yenessei



Ranks : Command 0 Agent 0 Emissary 0 Mage 0
 Health 0 Stealth 0 Challenge 0
 Artifacts : None
 Spells (+0) : None

Yenessei was located in the Mountains at 3423.

She was ordered to refuse all personal challenges.

She was ordered to guard a character. Elrond was guarded. She was injured by Martin while performing her guard mission. She was killed by Morgan while performing her guard mission.

